

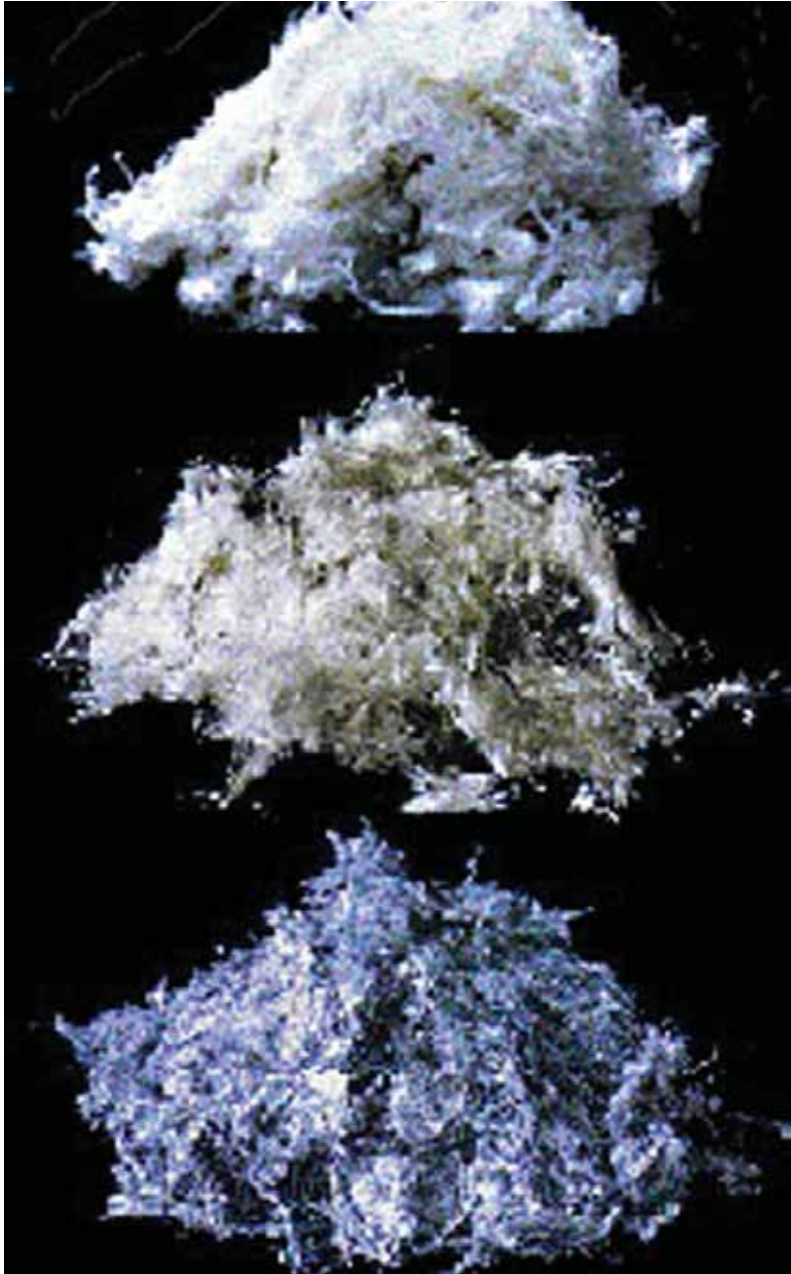
A GUIDE

to Asbestos



We use the term 'resident' to describe anyone living in one of our homes or receiving one of our services. This includes tenants, leaseholders, shared owners and those people living in supported or sheltered accommodation.

Asbestos



What is Asbestos?

Asbestos is the name given to a group of fibrous minerals found naturally in many parts of the world. In the past, asbestos was added to a variety of products to strengthen them and to provide fire proofing and noise reduction. Asbestos was commonly used in buildings up until the mid 1980's. Properties built after 1990 are unlikely to contain asbestos anywhere in the building.



All types of asbestos are potentially hazardous, but risks from it are only likely to arise when it is damaged or disturbed, releasing fibres into the air.

Where is Asbestos found in buildings?

Asbestos is most usually found in these locations:

- Insulation of pipes and boilers
- Fire break walls in lofts, fire protection in ducts such as firebreaks, panel partitions, soffit boards, ceiling panels and around steel work
- Insulation boards to partitions and ducts.
- Some ceiling and floor tiles
- Paper products used for insulation of electrical equipment
- Asbestos cement, flat or corrugated sheets used as roofing and wall cladding, gutters, rainwater pipes and water tanks
- Certain textured coatings e.g. Artex.



Asbestos that has been sealed with paint, covered with other materials or enclosed in ducts will not pose a significant risk if left undisturbed.



What is Cosmopolitan doing about Asbestos?

Cosmopolitan Housing Association's Asbestos Management Policy Statement:

Cosmopolitan Housing acknowledges the health hazards associated with exposure to asbestos and is committed to providing a healthy and safe working environment for all of its employees, contractors, residents and members of the public who may be affected by its activities.

To achieve this, the Association has implemented a programme of actions identifying, recording and managing asbestos in the properties it controls, undertaking this in a planned and rational manner based on risk assessment. The Association affirms that asbestos containing materials have been used in the past within their properties, but if well maintained they do not present any appreciable risk to health.



Removal of Asbestos should only be performed by the Association.

What should I do if I find Asbestos?

If you think asbestos may be in your home, don't panic! Asbestos materials in good condition will not release asbestos fibres. If you suspect that a product in your home may contain asbestos, don't touch it but look for signs of wear, such as tears, abrasions or water damage. If damage or deterioration is apparent notify the Association immediately and we will inspect it to determine if you are at risk.



Asbestos containing products can look very similar to those not containing asbestos – if in doubt contact Cosmopolitan Housing Association.

Can I continue with decorating and DIY?

Yes - but you must take note of the advice relating to any asbestos which may be present in your home. If your improvements are likely to increase the asbestos risk then you have to comply with the asbestos regulations and use specialist licensed contractors.

Remember you need Cosmopolitan's written permission if you want to improve your home.



Do not saw, drill, break, scrape, brush or screw any asbestos sheeting. If in doubt contact Cosmopolitan Housing Association.

Please Note: If you wish to obtain further information on asbestos please contact us at the address below, telephone: **0151 224 0205** or e-mail: **getinvolved@cosmopolitanhousing.co.uk**



**IF YOU HAVE ANY
QUESTIONS OR CONCERNS
ABOUT ASBESTOS IN YOUR
HOME WHICH ARE NOT
DEALT WITH IN THIS
LEAFLET, YOU CAN CONTACT
US ON:**

0808 100 2578



If you wish to have this document translated into your chosen language, please tick the relevant box below and return to Cosmopolitan Housing Association, Cosmopolitan House, 2 Marybone, Liverpool, L3 2BY.

This document is available in large print, Braille and audio tape on request.

إذا لڤك الرغبة فى الحصول على هذه الوثيقة مترجمة الى اللغة التى تختارها، أرجو ان تضع علامة على الصندوق وترجعه الى هيئة اسكان كوسموبوليتان.

Cosmopolitan Housing Association, Cosmopolitan House, 2 Marybone, Liverpool, L3 2BY.

(Arabic)

如果您想把这份文件翻译成中文，请在空格内划✓，然后把传单寄回：Cosmopolitan Housing Association, Cosmopolitan House, 2 Marybone, Liverpool, L3 2BY

(Chinese – Simplified)

如果您想把这份文件翻译成中文，请在空格内划✓，然后把传单寄回：Cosmopolitan Housing Association, Cosmopolitan House, 2 Marybone, Liverpool, L3 2BY

(Chinese – Traditional)

ئەگەر حەز دەکەیت ئەم دۆکیومەنتەت یۆ سەر زىمانى خۆت یۆ وەدیگێردیئیت ئەوا تکایە نیشانی ✓ لەو چوارگۆشە بەدەو بیگە یێنەو وە یۆ (کۆمەڵە) کوسمۆپۆلیتان یۆ خانووێبەرە) یۆ ئەم ناوینشانە:

Cosmopolitan Housing Association, Cosmopolitan House, 2 Marybone, Liverpool, L3 2BY

(Kurdish)

Jeśli chcieliby Państwo otrzymać tłumaczenie tego dokumentu w wybranym języku, prosimy odhaczyć okienko i odesłać do: Cosmopolitan Housing Association, Cosmopolitan House, 2 Marybone, Liverpool, L3 2BY.

(Polish)

Haddii aad jeclaan laheyd in documentigan luqad aad dooratay lagu soo turjumo, fadlan sax sanduuqa oo u soo celi hey'adda guriyeynta ah ee Cosmopolitan Housing Association, Cosmopolitan House, 2 Marybone, Liverpool, L3 2BY.

(Somali)

Bu belgenin seçtiğiniz dile tercüme edilmesini arzu ediyorsanız, lütfen kutuyu işaretleyin ve Cosmopolitan Housing Association, Cosmopolitan House, 2 Marybone, Liverpool, L3 2BY adresine geri gönderin.

(Turkish)

Please be aware that Cosmopolitan Housing Association may record any incoming or outgoing telephone calls as part of our commitment to providing excellent customer service.



Cosmopolitan House, 2 Marybone, Liverpool L3 2BY,
Telephone: 0151 227 3716 Fax: 0151 227 4991
www.cosmopolitanhousing.co.uk

Cosmopolitan Housing Association is a Charitable Industrial and Provident Society.

CSL/023/JULY11